

# Welcome to the AccessibilityOnline Webinar Series



A collaborative program between the  
ADA National Network and the  
U.S. Access Board



**The Session is Scheduled to begin at 2:30pm Eastern Time**  
**We will be testing sound quality periodically**

**Audio and Visual are provided through the on-line webinar system. This session is closed captioned.** Individuals may also listen via telephone by dialing 1-712-432-3100 code 930098 (This is **not** a Toll Free number)

The content and materials of this training are property of the US Access Board and the Great Lakes ADA Center and cannot be used and/or distributed without permission. This program is funded through a contract agreement with the U.S. Access Board. For permission to use training content or obtain copies of materials used as part of this program please contact us by email at [adata@adagreatlakes.org](mailto:adata@adagreatlakes.org) or toll free (877)232-1990 (V/TTY)

[www.AccessibilityOnline.org](http://www.AccessibilityOnline.org)

1



## Listening to the Webinar



- The audio for today's webinar is being broadcast through your computer. Please make sure your speakers are turned on or your headphones are plugged in.
- You can control the audio broadcast via the Audio & Video panel. You can adjust the sound by "sliding" the sound bar left or right.
- If you are having sound quality problems check your audio controls by going through the Audio Wizard which is accessed by selecting the microphone icon on the Audio & Video panel



2



## Listening to the Webinar, *continued*



If you do not have sound capabilities on your computer or prefer to listen by phone, dial:

**1-712-432-3100**

**Pass Code:**  
930098

This is **not** a Toll Free number

3

## Listening to the Webinar, *continued*



MOBILE Users (iPhone, iPad, or Android device and Kindle Fire HD)

Individuals may listen\*\* to the session using the Blackboard Collaborate Mobile App (Available Free from the Apple Store, Google Play or Amazon )




\*\*Closed Captioning is not visible via the Mobile App and limited accessibility for screen reader/Voiceover users

4



## Captioning

- Real-time captioning is provided during this webinar.
- The caption screen can be accessed by choosing the  icon in the Audio & Video panel. ↓



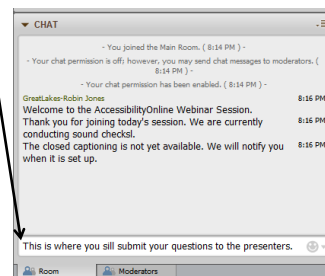
- Once selected you will have the option to resize the captioning window, change the font size and save the transcript.

5



## Submitting Questions

- You may type and submit questions in the Chat Area Text Box or press Control-M and enter text in the Chat Area
- If you are connected via a mobile device you may submit questions in the chat area within the App
- If you are listening by phone and not logged in to the webinar, you may ask questions by emailing them to [webinars@accessibilityonline.org](mailto:webinars@accessibilityonline.org)



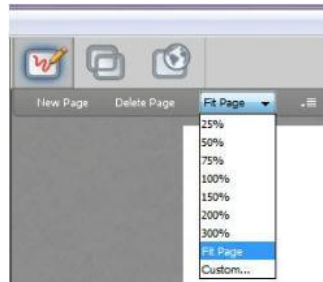
**Please note:** This webinar is being recorded and can be accessed on the AccessibilityOnline website at [www.accessibilityonline.org/Archives](http://www.accessibilityonline.org/Archives) within 24 hours after the conclusion of the session.

6



## Customize Your View


- Resize the Whiteboard where the Presentation slides are shown to make it smaller or larger by choosing from the drop down menu located above and to the left of the whiteboard. The default is “fit page”



7



## Customize Your View *continued*

- Resize/Reposition the Chat, Participant and Audio & Video panels by “detaching” and using your mouse to reposition or “stretch/shrink”. Each panel may be detached using the  icon in the upper right corner of each panel.

8

## Setting Preferences

- Depending on your system settings you may receive visual and audible notifications when individuals enter/leave the webinar room or when other actions are taken by participants. This can be distracting.
- To turn off notifications (audible/visual)
  - Select “Edit” from the tool bar at the top of your screen
  - From the drop down menu select “Preferences”
  - Scroll down to “General”
    - select “Audible Notifications” Uncheck anything you don’t want to receive and “apply”
    - Select “Visual Notifications” Uncheck anything you don’t want to receive and “apply”
  - For Screen Reader User – Set preferences through the setting options within the Activity Window (Ctrl+slash opens the activity window)

9



## Technical Assistance



- If you experience any technical difficulties during the webinar:
  1. Send a private chat message to the host by double clicking “Great Lakes ADA” in the participant list. A tab titled “Great Lakes ADA” will appear in the chat panel. Type your comment in the text box and “enter” (Keyboard - F6, Arrow up or down to locate “Great Lakes ADA” and select to send a message ); or
  2. Email [webinars@accessibilityonline.org](mailto:webinars@accessibilityonline.org) ; or
  3. Call 877-232-1990 (V/TTY)

10

# Emergency Transportable Housing

11

**Presenter**  
**U.S. Access Board**



**Marsha Mazz**

12

# Session Agenda

- Overview
- Issued addressed
- Q & A

13

## Emergency Transportable Housing



**Final Rule Published in the Federal Register  
on May 7, 2014**

**Effective June 6, 2014  
Corrections on September 26, 2014**

14

# **Advisory Committee**

## **A Diverse Group**

- Advocacy Center
- Coalition for Citizens with Disabilities
- U.S. Department of Housing and Urban Development
- Department of Justice
- Federal Emergency Management Agency
- Manufactured Housing Association for Regulatory Reform
- Manufactured Housing Institute
- National Center for Environmental Health Strategies
- National Council on Independent Living
- National Fire Protection Association
- Recreational Park Trailer Industry Association
- Recreational Vehicle Industry Association
- United Spinal Association

15

## **Issues Addressed**

- |                    |                  |
|--------------------|------------------|
| • Definition       | • Work Surfaces  |
| • Scoping          | • Carpet         |
| • Operable parts   | • Bedrooms       |
| • Site constraints | • Alarms         |
| • Adaptability     | • Weather Radios |

16



# New Definition

**Emergency Transportable Housing Unit.** A single or multiple section prefabricated structure that is transportable by a single transport vehicle and that can be set-up and installed on a temporary site in response to an emergency need for temporary housing. Such structures include, but are not limited to, travel trailers, park models, manufactured housing, and other factory-built housing. For the purposes of this document, emergency transportable housing units are considered a type of residential dwelling unit.



17

## Scoping

Units with mobility features on private sites provided by the occupant

- As determined by a needs assessment conducted by the entity providing the units

Units with communication features

- As determined by a needs assessment conducted by the entity providing the units

Sections 233.3.1.2.1 and 233.3.2

18

# Scoping

Group Sites Developed for the Installation of Emergency Transportable Housing

- 10% unit pads designed to accept units providing mobility features, and
- 5% units with mobility features



Section 233.3.1.2.2

19

# Scoping

Commercial Sites Leased by the Federal gov't

- As determined by a needs assessment conducted by the entity providing the units



Sections F202.6.5.9 and .10

20

# Ramps

- Adds new exceptions for ramp run and rise where site constraints prohibit a complying ramp.
- Allows 1:10 slope max
- Allows a 36 inch rise



Sections 405.2 and 405.6  
Exceptions

21

# Platform Lifts



Prohibits the use of platform lifts at the primary entrance to a unit

Section 206.7

22

## Kitchen Outlets



Removes the exception permitting certain kitchen outlets to be outside the reach ranges specified in the guidelines

Section 205.1 EX 3

23

## Operable Parts

Exempts water-shut off valves for all types of units and operable parts located beneath the unit Body

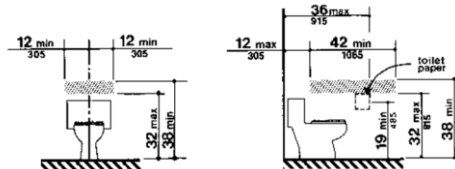


Section 205.1 EX 10 & 11

24

# Adaptable Features

Requires units to be accessible, not adaptable, when first constructed



25

# Shower Seats

Requires an attached seat in all showers.



Section 608.4

26

## Grab Bars

Grab bars must be provided at:

- toilets
- showers
- bathtubs



Sections 604.5, 607.4, and 608.3

27

## Lavatories and Sinks

Require a water spray unit at the kitchen sink and knee clearance in kitchens and bath



Sections 606.2 EX 3 and 606.4

28

## Kitchen Work Surfaces

Allows the supplied kitchen table to substitute for the required kitchen work surface provided:

- it is accessible
- electrical outlet within reach
- all countertops 34" high max



Section 804.3 EX

29

## Floor Surfaces

Prohibits the use of carpet in emergency transportable housing units.



Section 809.2.1.2

30



## Clearance Alongside Beds

Requires clearance along one side of a bed  
– similar to transient lodging 806.2.3.



Section 809.2.5.1

31

## Clearance Around Furniture in Bedrooms

Prohibits supplied furniture from overlapping  
accessible routes and clearances in bedrooms  
less than 70 sf  
- the minimum size of  
a bedroom allowed by  
building codes



Section 809.2.5.2

32



## Bedroom Lighting Controls



Lighting control must be reachable from a bed

Section 809.2.5.3

33

## Visual Smoke Alarms

Specifies that visible smoke alarms must have a reliable power source.



Section 809.3.1.2

34

# Weather Alert System

When provided,  
weather alert radios  
must meet requirements  
for operable parts and  
have both audio and  
visual displays



Sections 809.2.6 and 809.3.4

35

# Questions?

**You May Type and Submit questions in the Chat  
Area Text Box or press Control-M and enter text in  
the Chat Area**

36



# U.S. Access Board

**(800) 872-2253 (voice)**

**(800) 993-2822 (TTY)**

**E-mail: [ta@access-board.gov](mailto:ta@access-board.gov)**

**[www.access-board.gov](http://www.access-board.gov)**

*"Advancing Full Access and Inclusion for All"*

37

**Thank you for participating  
in today's webinar**



**Next session:**

**January 8, 2015**

***Accessible Hospitals and Medical Care Facilities - "Advanced Session"***

**2:30 pm – 4:00 pm**

**[www.accessibilityonline.org](http://www.accessibilityonline.org)**

**(877) 232-1990 (v/TTY)**

38



# Continuing Education



**AIA Provider Number:** I017

**LA CES Provider Name:** Great Lakes ADA Center

**AICP Provider Name:** Great Lakes ADA Center



**Course Title:** Emergency Transportable Housing

**Course Number:** GL20141204

**Date:** December 4, 2014



Credits earned on completion of this course will be reported to **AIA CES** for AIA members and **LA CES** for those with an LA number. Certificates of Completion are available upon request.

This course is registered with **AIA**, **LA CES**, and **AICP** for continuing professional education. As such, it does not include content that may be deemed or construed to be an approval or endorsement by the professional organizations of any material of construction or any method or manner of handling, using, distributing, or dealing in any material or product.

Questions will be addressed at the conclusion of this presentation.

39